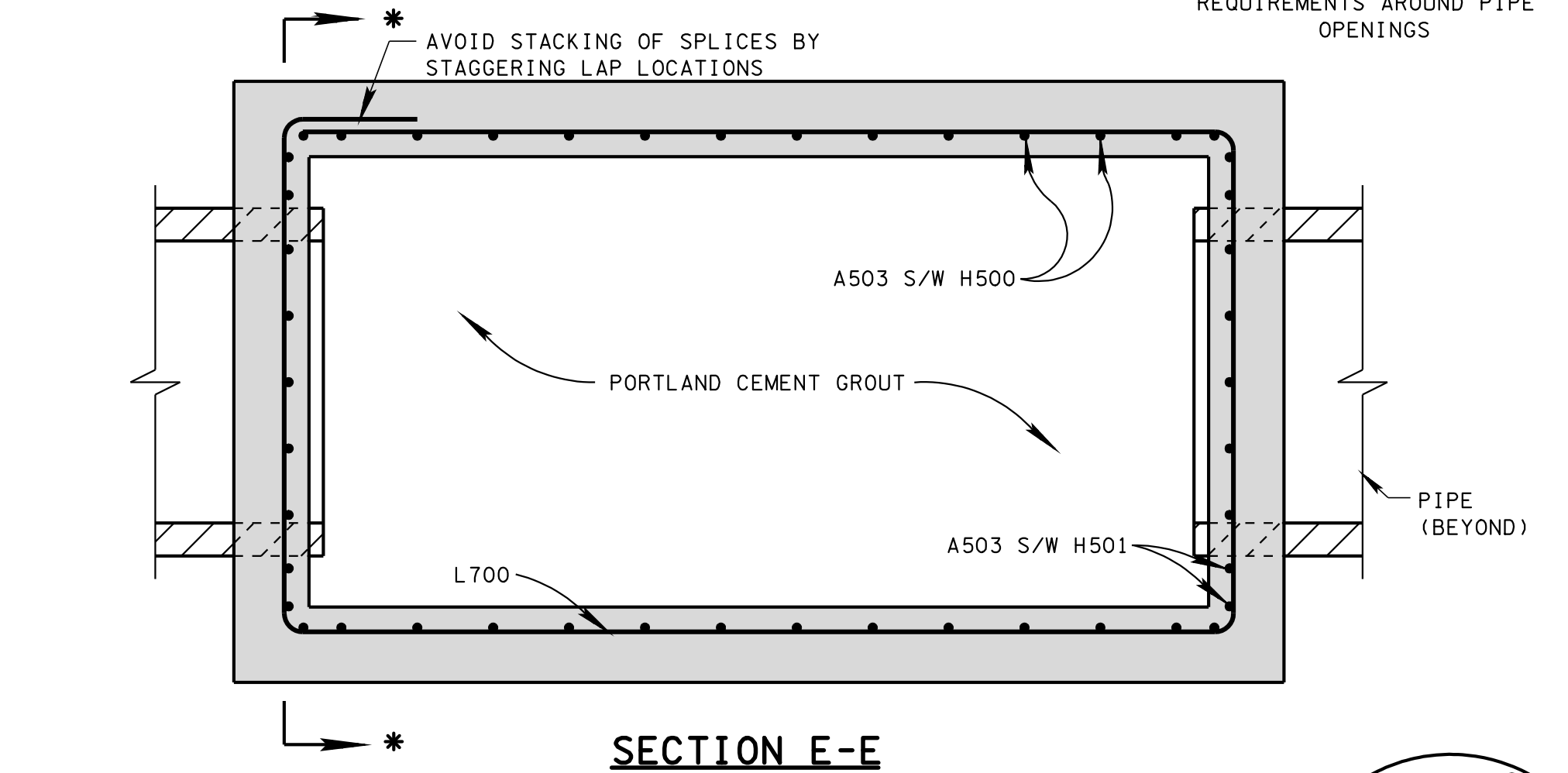
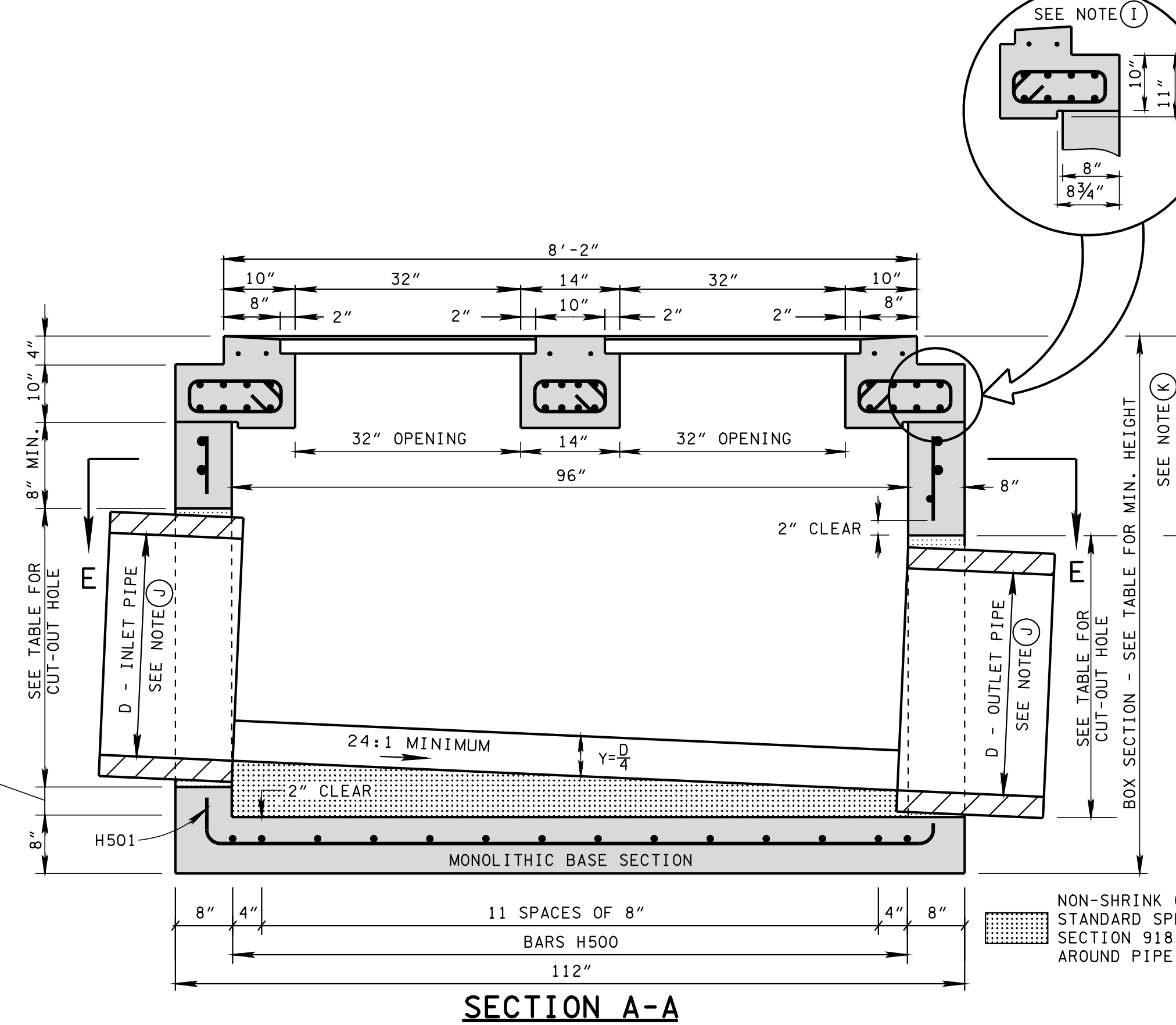


PLAN VIEW

SECTION *-*
X-SECT. VIEW IS PROVIDED ON
STANDARD DRAWING D-CB-99
SHOWING REINFORCEMENT
REQUIREMENTS AROUND PIPE
OPENINGS

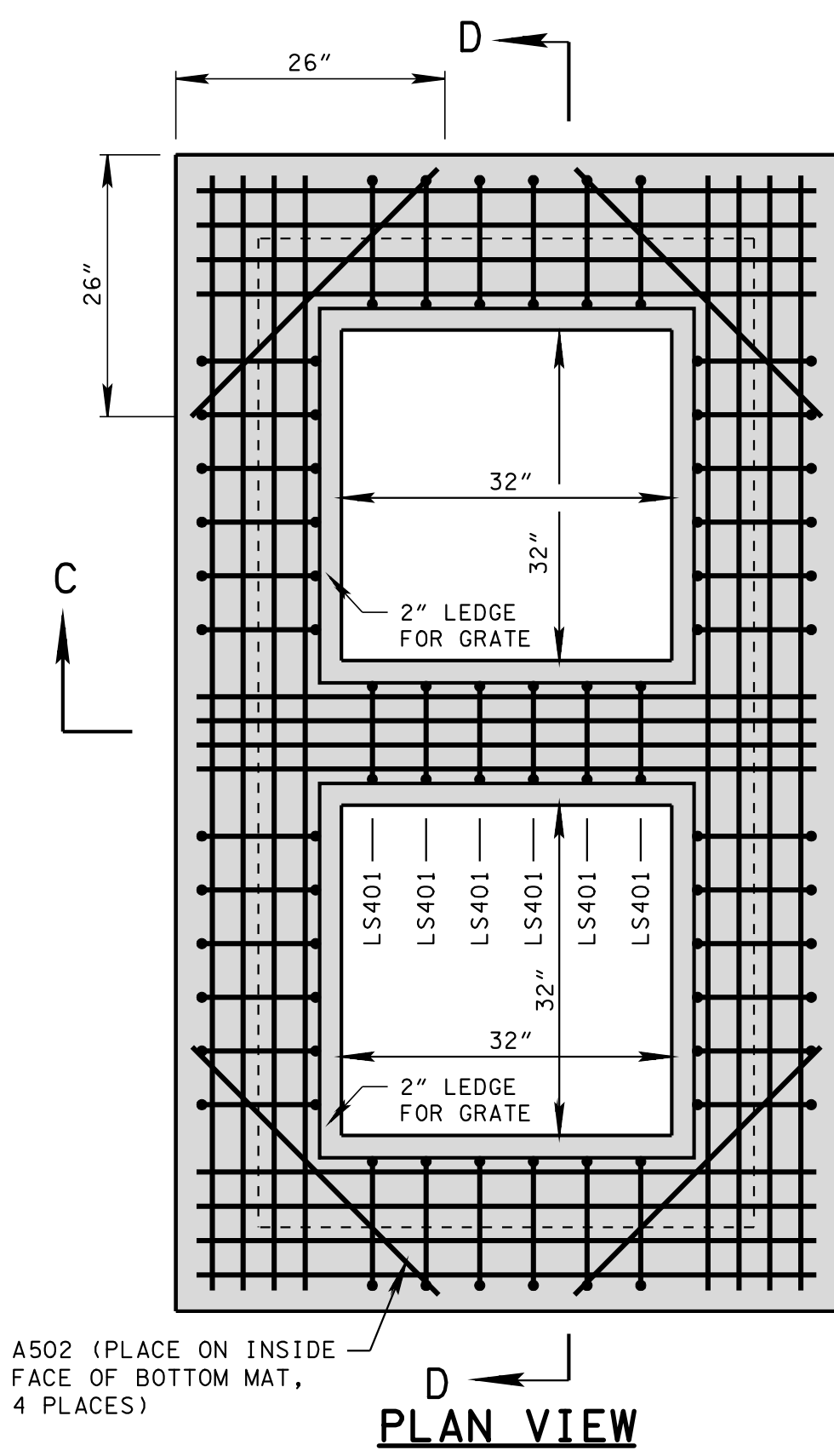


SECTION E-E



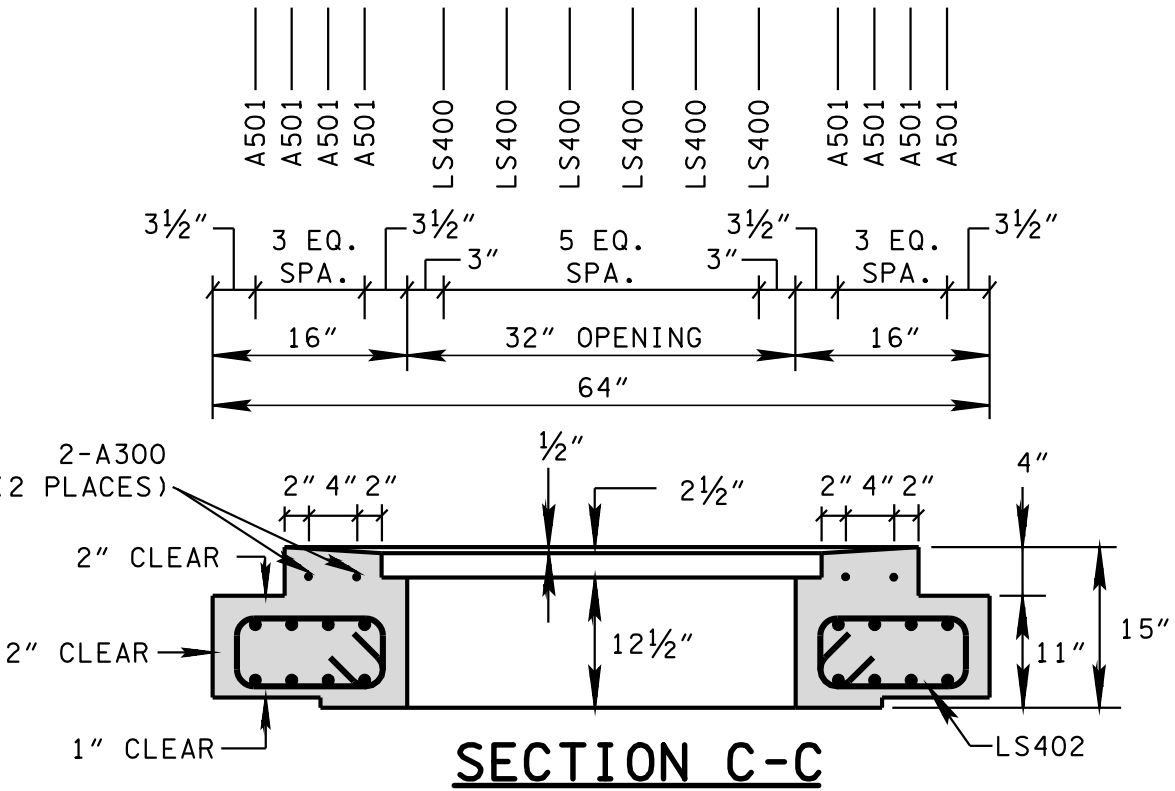
SECTION A-A

NON-SHRINK GROUT PER
STANDARD SPECIFICATIONS
SECTION 918 REQUIRED
AROUND PIPE OPENINGS ONLY

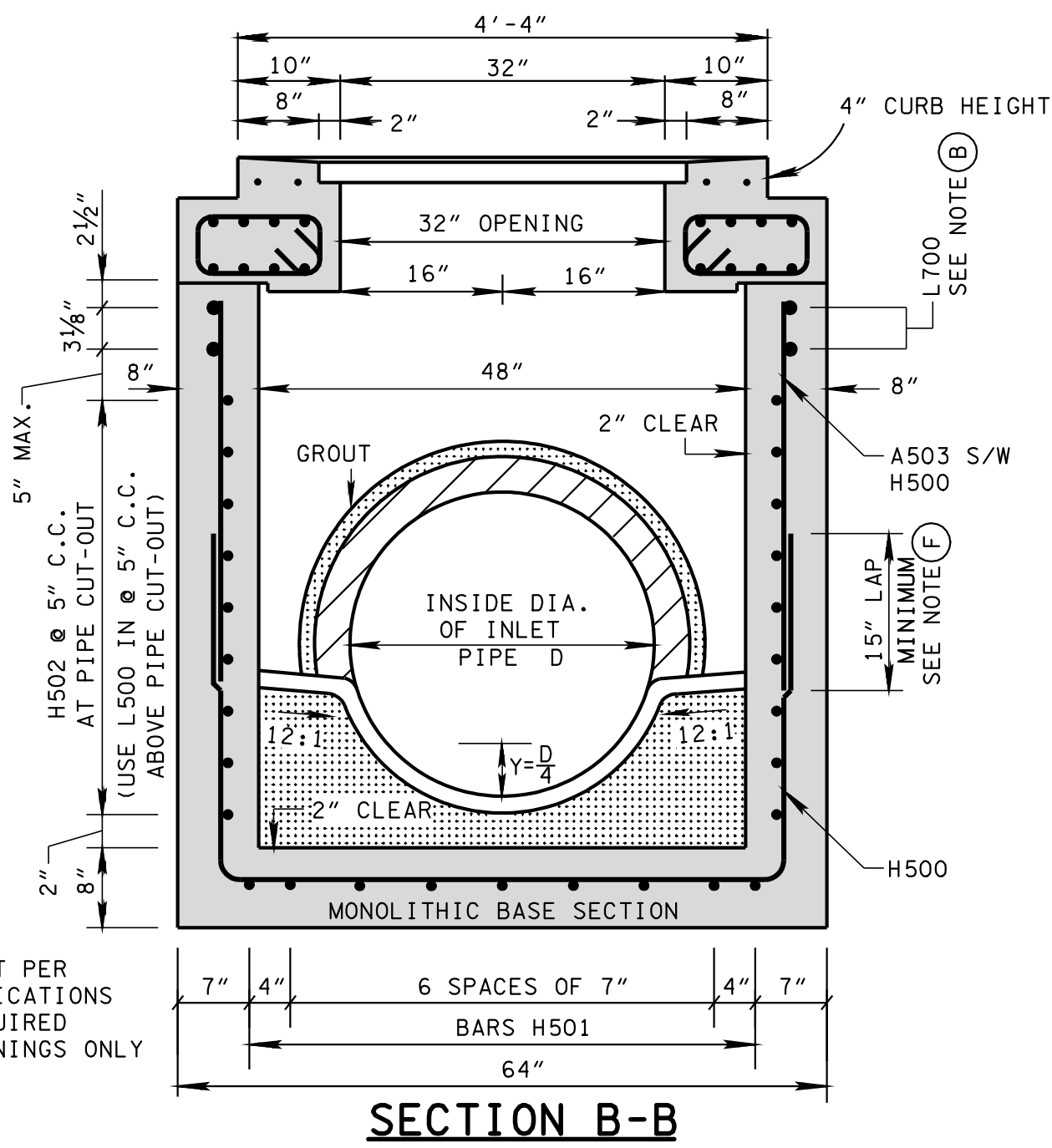


PLAN VIEW

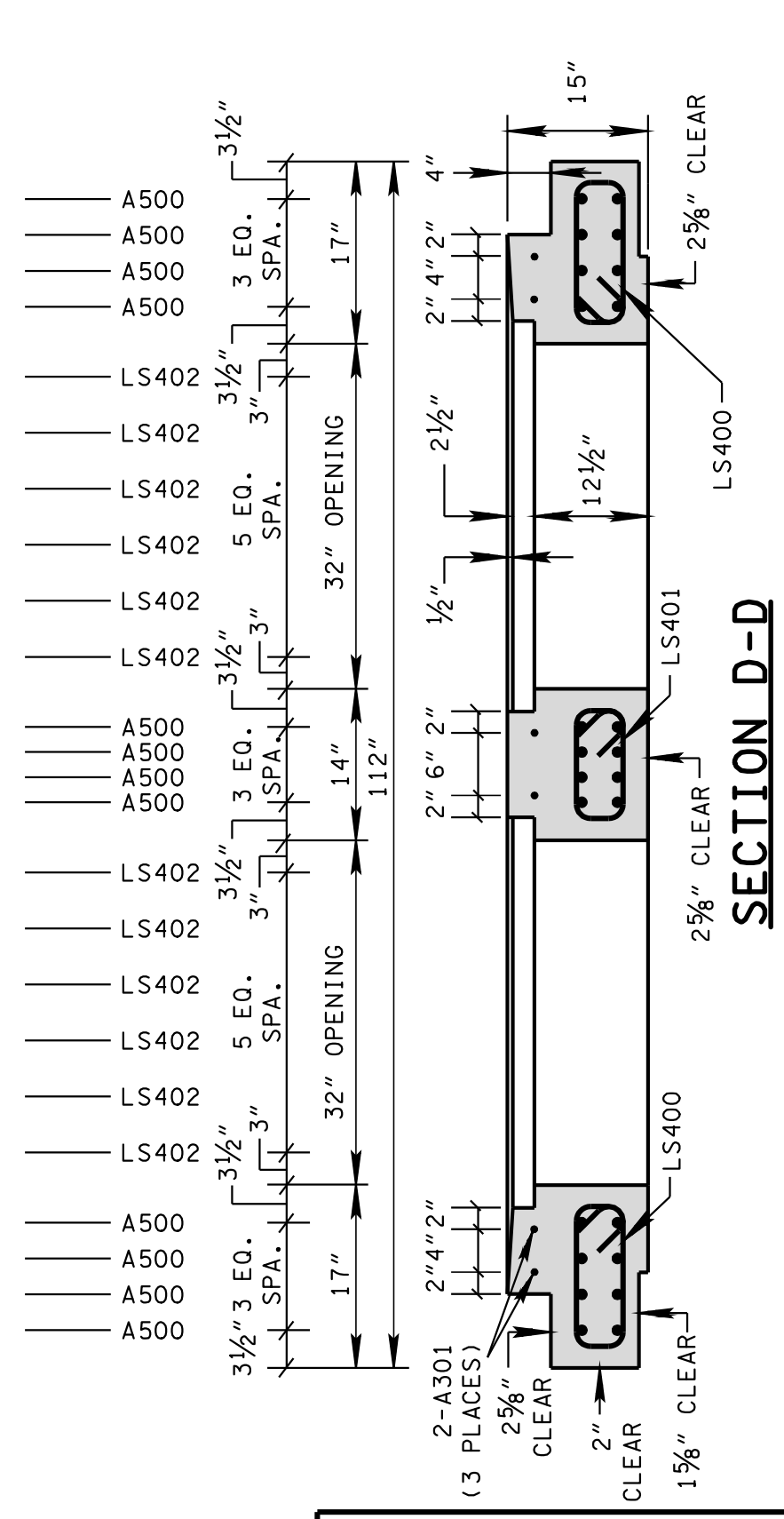
A502 (PLACE ON INSIDE
FACE OF BOTTOM MAT,
4 PLACES)



SECTION C-C



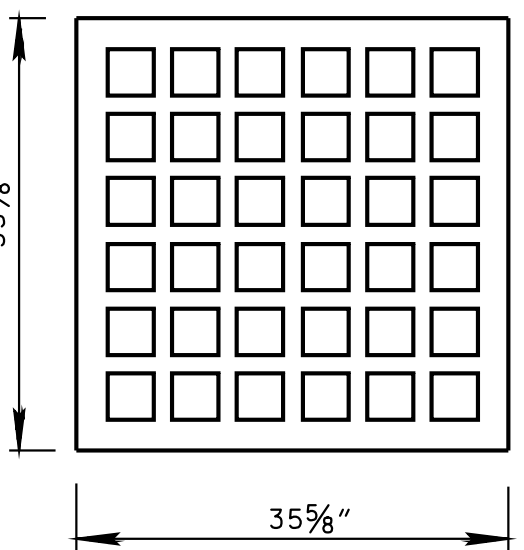
SECTION B-B



CATCH BASIN MAXIMUM DEPTH NOTE				
MAXIMUM DEPTH FOR THIS STRUCTURE IS 20.00'.				

CATCH BASIN DIMENSIONS				FOR DESIGN USE ONLY
INSIDE DIAMETER (D) OF PIPE (INCHES)	PIPE WALL THICKNESS (INCHES)	DIAMETER OF CUT-OUT HOLES (INCHES)	BOX SECTION MINIMUM HEIGHTS (INCHES)	CATCH BASIN MINIMUM DESIGN DEPTH (FEET)
18	2 1/2	25	57	3.88
24	3	32	64	4.42
30	3 1/2	39	71	4.97
36	4	46	78	5.51
42	4 1/2	53	85	6.05
48	5	60	92	6.59
54	5 1/2	67	99	7.13
60	6	74	106	7.67

- CUT-OUT HOLES BASED ON REINFORCED CONCRETE PIPE WITH WALL TYPE "B".
- ALL FLEXIBLE PIPE MATERIALS REQUIRE GASKET. SEE STANDARD DRAWING D-PB-2.
- CUT-OUT HOLES FOR PRECAST STRUCTURES TO BE FORMED IN ORDER TO OBTAIN A SMOOTH EGGED HOLE. SCORED OR ETCHED HOLES WITH REINFORCING STEEL LEFT UNCUT WILL NOT BE PERMITTED.
- TO BE USED IN 96 INCH INTERIOR WALL ONLY.



GRATE UNIT NO. 43

(SEE STD. DWG. D-CBB-42
FOR GRATE DETAILS)

☐ MINOR REVISION -- FHWA
APPROVAL NOT REQUIRED.

GENERAL NOTES

- DRAWING TO BE USED FOR ALL CAST-IN-PLACE NO. 43SB CONCRETE CATCH BASINS AND ALL PRECAST NO. 43SB CONCRETE CATCH BASINS. SEE STANDARD DRAWING D-CB-99 FOR ADDITIONAL CONSTRUCTION NOTES & DETAILS.
- THIS DRAWING DEPICTS THE MINIMUM HORIZONTAL REINFORCING AT THE TOP OF CATCH BASIN WALLS. SEE ADDITIONAL DETAILS ON STANDARD DRAWING D-CB-99 FOR TALLER SECTIONS AND STEEL PLACEMENT ABOVE PIPE OPENINGS.
- CAST-IN-PLACE CONCRETE CATCH BASINS SHALL BE CONSTRUCTED IN ACCORDANCE WITH STANDARD SPECIFICATIONS, SECTION 611 AND/OR SPECIAL PROVISIONS UNLESS SUPERSEDED BY THIS DRAWING. THE CONTRACTOR MAY WITH PERMISSION FROM THE ENGINEER SUBSTITUTE PRECAST CATCH BASINS FOR CAST-IN-PLACE CATCH BASINS PROVIDED THAT ALL PRECAST ELEMENTS MEET ASTM C913 (CURRENT EDITION) UNLESS SUPERSEDED BY THIS DRAWING.
- THE FOLLOWING MATERIAL PROPERTIES ARE REQUIRED FOR BOTH CAST-IN-PLACE AND PRECAST STRUCTURES:

CONCRETE: $f'_c = 4,000$ POUNDS PER SQUARE INCH AT 28 DAYS
REINFORCING STEEL: ASTM A615, $F_y = 60,000$ POUNDS PER SQUARE INCH
ALL REINFORCING IS TO BE INSTALLED AS DETAILED ON THIS DRAWING.
- PRECAST CATCH BASIN UNITS WHICH ARE DAMAGED DURING SHIPMENT OR INSTALLATION WILL BE REJECTED. IT SHALL BE THE RESPONSIBILITY OF THE CONTRACTOR TO REPLACE DAMAGED CATCH BASIN UNITS AT HIS OWN EXPENSE.
- THE CONTRACTOR MAY ELIMINATE THE A503 BARS BY LENGTHENING THE VERTICAL LEG OF THE H500/H501 BARS SO THAT 1 1/2 INCHES OF CLEAR COVER IS PROVIDED AT THE TOP OF THE STRUCTURE.
- APPROPRIATE SIZING AND LOCATION OF LIFTING DEVICES SHALL BE THE RESPONSIBILITY OF THE FABRICATOR.
- THE CONTRACTOR IS TO PATCH ALL LIFTING DEVICE HOLES WITH GROUT AND PLACE A MINIMUM OF ONE (1) INCH OF COVER OVER THE HARDWARE OF THESE DEVICES ON BOTH TOP AND BOTTOM SURFACES.
- ALTERNATIVE JOINT DETAILS MAY BE ACCEPTABLE. SEE STANDARD DRAWING D-CB-99 FOR ADDITIONAL DETAILS.
- SEE ROADWAY PLANS DRAINAGE TABULATION FOR PIPE INLET AND OUTLET ELEVATIONS. IF NEEDED, INVERT ELEVATIONS MAY BE ADJUSTED AS DIRECTED BY THE ENGINEER IN ORDER TO ACCOMMODATE INLET AND OUTLET PIPES.
- FOR CASES WHERE THE OUTLET PIPE DIAMETER IS LARGER THAN THE INLET PIPE DIAMETER, A MINIMUM 22 INCH DEPTH SHALL BE MAINTAINED ABOVE THE OUTLET PIPE.
- SEE STANDARD DRAWING D-CBB-42 FOR DETAILS REGARDING CAST IRON GRATES.
- PAY DEPTH MEASUREMENT MADE FROM TOP OF GRATE TO OUTLET FLOW ELEVATION. PAYMENT FOR CATCH BASIN WILL BE MADE UNDER ITEM NUMBERS 611-43.01 CATCH BASINS, TYPE 43, 0'-4' DEPTH THROUGH 611-43.05, CATCH BASINS, TYPE 43, > 16'-20' DEPTH PER EACH. PAYMENT INCLUDES GRATES.

REINFORCING STEEL LEGEND

A500	60"	12"	101 1/4"	53 1/4"	H501	26"	102 1/2"	26"	H500	26"	54 1/2"	26"
A501	108"	53 1/4"	101 1/4"	53 1/4"	H501	53 1/4"	102 1/2"	26"	H500	53 1/4"	13"	10"
A502	34"	56 1/4"	104 1/4"	56 1/4"	H502	53 1/4"	101 1/4"	6" MIN.	53 1/4"	6" MIN.	10"	12"
A503	VARIABLE	56 1/4"	104 1/4"	56 1/4"	H502	53 1/4"	101 1/4"	6" MIN.	53 1/4"	6" MIN.	10"	12"
A300	94"	56 1/4"	104 1/4"	56 1/4"	H502	53 1/4"	101 1/4"	6" MIN.	53 1/4"	6" MIN.	10"	12"
A301	48"	56 1/4"	104 1/4"	56 1/4"	H502	53 1/4"	101 1/4"	6" MIN.	53 1/4"	6" MIN.	10"	12"

DIMENSIONS SHOWN ON THIS LEGEND ARE OUTSIDE TO OUTSIDE OF BAR. STANDARD C.R.S.I. HOOK AND TIE DETAILS SHALL APPLY, EXCEPT AS NOTED.

NOT TO SCALE